

Bringing Art *to* Life

No. 11, Fall 2003

THE
art
CONNECTION

A Little Italy in Greater Boston

Marian Dioguardi's oils are studies in color and light. You can almost feel the sun drying the clothes hanging in her

The websites of these two artists show how they use different media to interpret shared inspirations and exhibit some art that they have donated to local agencies. Their websites are: refrigerator-art.org and venicewindows.com.

These two artists show how they use oil painting and photography to interpret shared inspirations.

"Clothesline in April, Burano #2." And viewing her detailed still-lives of eggplants, garlic bulbs, and lemons (how many shades of yellow can a lemon have?) whet more than just your visual appetite. Her enthusiasm for food and art enthrall the viewer.

Marian recently donated four oils to the South End Community Health Center and soon after referred another artist to The Art Connection, husband and photographer John Borchard. They share artistic inspirations. John, too, has an affinity for Venice, focusing his lens on its windows and doorways and appreciating the beauty of everyday life. These artworks already have struck a chord with agencies such as Hillside Fresh Start, Metro Boston Mental Health, and Senior Living on Bellingham Hill.



John Borchard's giclee print "Pink," from his Venice Window series, has been chosen by Tewksbury Hospital in Tewksbury, MA.

THE MASTHEAD of this newsletter features "Clothesline in April, Burano #2" by West Newton artist Marian Dioguardi. This oil on panel, a gift from the artist, is now on permanent display at South End Community Health Center in Boston.

The Art Connection, Inc.

539 Tremont Street
Boston, MA 02116

Tel (617) 338-7668
Fax (617) 451-2884
info@theartconnection.org
www.theartconnection.org

Staff

James McDonald, *Executive Director*
Jay Knox, *Program Manager*
Sarah Shallbetter, *Program Coordinator*

Board of Directors

Alyce Adams
Elizabeth Boveroux, *Treasurer/Clerk*
Elizabeth Cady
Tim Carlson
Fay Chandler, *Founder*
Mary Coogan, *Chair*
Jan Cuypers
Paul Foley
Linda George, *Vice Chair*
Henry Goodrow
Amanda Hurd, *Chair Emeritus*
Anna Faith Jones
Mary M. Lassen
Anne Malone, *Vice Chair*
Dale Mitchell
Susan Rodgeron
Lynn K. Schweikart
Michael Tucci
Elaine Werby

Honorary Directors

Jane Alexander
Ralph Hamilton
Grace Hartigan
Maud Morgan (deceased)

Advisors

A.D. (Appy) Chandler
Elizabeth D. Coxe
Judith Felton
Susan Hartnett
Sarah L. Hutt
Michael Johnston
Allen B. Koenig
Ellie Lazarus
Leah Lipton
Susan McCraw
Shepley Metcalf
David Murphy
Carolyn Muskat
Cynthia Nartonis
Irving Rabb
George T. Shaw
Helen S. Shlien
Nancy Simonds
Anna Marie Svedrofsky
Howard M. Turner, Jr.
Lydia Walshin

The Art Connection, Inc., a 501(c)3 nonprofit organization, seeks to enrich and educate underserved communities by expanding public access to original works of art. Since many public and nonprofit institutions have no resources with which to acquire original art, and because artists often have unsold work, The Art Connection aims to increase the flow of art from the artists to those who would not otherwise have the opportunity to experience art in their lives.

Copyright 2003 by The Art Connection, Inc.
We welcome your contributions and comments.

Report from the Executive Director

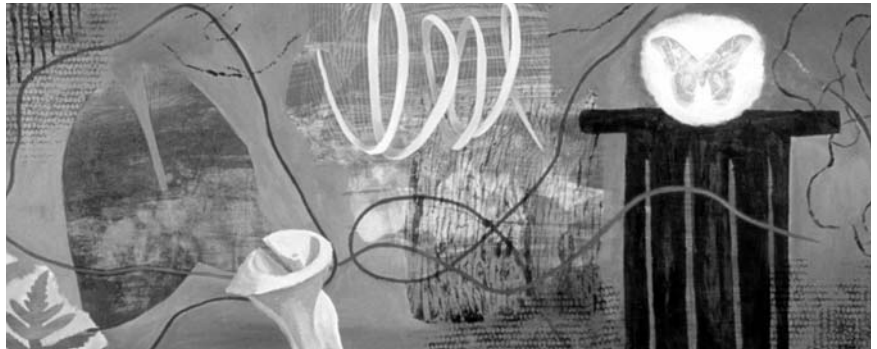
Dear Friends,

Welcome to a new look for The Art Connection, one that will help us celebrate the creative spirit of the visual arts and our mission to connect art to life. To date, we have placed more than 1600 original works of art by more than 100 artists and collectors in 130 qualifying organizations in greater Boston. Each individual work connects and reverberates in a different way with each viewer.

We've also connected with the Maryland Institute College of Art, where their Art Connection Project is now underway, one that uses our art donation and placement program as a model for their annual alumni exhibition and celebration.

Speaking of celebrations, we just had our 9th birthday. Last year we celebrated in grand style with a double birthday bash that also honored our founder Fay Chandler. This year we toned down the festivities, but a new celebration is in the works. And our annual appeal will take place next month, the perfect opportunity to make an even stronger connection to The Art Connection. Please watch for our letter. It may come with a small surprise! And please continue to MAKE the art connection!

Jim McDonald, Executive Director



We're in Cahoots!

Carol Lasky and Cahoots Design worked with The Art Connection's external affairs committee and staff over the past six months to enhance the visual identity of our organization and help us communicate with new audiences. One result of these efforts is a greater visual focus on the art that is given through The Art Connection to qualifying organizations. Generous art donors and you make these art

placements possible: You "MAKE The Art Connection."



We are excited to premier the new look in this newsletter. Our enhanced identity soon will be evident in everything from our brochure and website to artists postcards and more. Thanks to Erin, Janice, John, Mike and Carol (the Cahootians). We invite you to see more of their fun, creative work at cahootsdesign.com.





At the CFCS open house performer **Benjamin Effant** entertains children in front of the oil painting, "The Day We Flew the Kite," by **Marion Mansbach**.

Celebrating Children and Art

Cambridge Family and Children's Services (CFCS) selected twenty-five artworks for its newly renovated building on Gore Street in Cambridge and showcased the art at its grand opening celebration in June. CFCS strengthens families and serves children through a myriad of programs that address issues around adoption, developmental disabilities, foster care, and transitional housing.

Children and families from forty cities and towns in Greater Boston

participate in CFCS's programs and now enjoy art from fourteen different artists in the agency's reception areas, family rooms, and interview rooms. Artists include **Sandra Aizley, Irma Ceresse, Fay Chandler, Allan Rohan Crite, Jennifer Erbe, Dorothy Uhlig Green, Shlomith Haber-Schaim, Anne Kirchheimer, Judith Liberman, Marion Mansbach, Cynthia Nartonis, Eleanor Rubin, Durlabh Singh, and Maria Termini.**

Sharing our Recipe

Thanks to funding from our Vision Fund, The Art Connection is sharing our recipe of success with other communities. We are thrilled to announce that the MICA (Maryland Institute College of Art) has officially launched its Art Connection Project, based on our program. Nonprofit organizations in Baltimore will benefit from the contributions of alumni artists, whose work will be shown at their annual alumni exhibition in May.

We have also consulted with individuals and organizations in San Francisco and Washington, DC who are exploring opportunities to emulate our art donation program in these cities. In conjunction with our identity work, we have developed a portfolio of materials that serve to introduce our program to interested organizations in communities beyond Boston.

Emerson Umbrella

The Art Connection staff met with artists (shown below) from the Emerson Umbrella Center for the Arts in Concord to discuss our art donation and placement program. Inquisitive Umbrella artists learned how they could become involved, and twelve asked for materials to become art donors. If you know of an artists' association that would be interested in learning about us, we would be happy to share a multimedia presentation with them.



Recent Selections

Anne Kirchheimer's "Birds in Western Sunset," mixed media (left) and "Luna Moth" (opposite page), oil on panel, by **Adria Arch**, were recently chosen by the selection committee at a qualifying nonprofit organization, Cerebral Palsy of Massachusetts.



Small Wonders

A June open house and art celebration in Dorchester served as the culmination of a collaborative project between Bay Cove Small Wonders, The Art Connection, and artist Paul Foley. That evening we unveiled thirty large format, archivally printed digital photographic images of Paul's work.

Each image depicts the agency's young clients, capturing each one's personality, celebrating each "small wonder." Paul, who is also a board member of The Art

Connection and head of our program committee, uses photography to create a powerful testimonial to the beauty and



individuality of every child. The art collection illustrates and amplifies Bay Cove's goal to enhance each person's self-worth. Bay Cove Small Wonders provides high quality early intervention, early childhood education, and family support services for some of urban Boston's poorest infants and toddlers with special needs.

The printing of these inkjet images was made possible through the generous contributions of Northeastern University's Dept. of Visual Arts and its Technical Director of Photography, Bruce Hamilton.

“Some of my favorite responses to the pictures have been nonverbal, as the children themselves have realized that their portraits are hanging on the wall, larger than life size. They just point and look amazed!” *Candace Chang, Director, Bay Cove Small Wonders*



Artist **Paul Foley**, shown (left) in front of the atrium entrance to Bay Cove Small Wonders, where thirty large format digital prints of program participants and families greet all who visit the agency. Right and above: additional portraits.



THE
art
CONNECTION

539 Tremont Street Boston, MA 02116 (617) 338-7668

Non-Profit Org
U.S. Postage Paid
Boston, MA
Permit No. 55769

Bringing Art *to* Life